



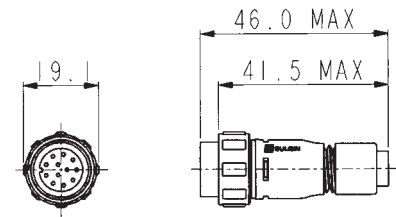
- Sealed to IP68 when mated
- IP68 rating tested at 1.054kg/sq cm (15lb/sq in) 10m depth for 2 weeks
- 2 and 3 pole - 8A, 250V rating
- 4, 6 and 8 pole - 5A, 125V rating
- 10 and 12 pole - 1A, 50V rating
- 2.5mm contact engagement for electrical integrity 'Scoop proof' contacts
- Contact inserts are part of body moulding
- Cable range from 3 to 7mm
- Overall length (flex + flex in-line) 80mm
- Gold plated contacts
- Diameter over coupling ring 19.1mm
- Pre-wired, overmoulded cable assemblies
- Flex, Flex In-Line, Front Panel, Rear Panel and PCB mounting body styles
- Plug and Socket versions in all body styles
- Flame Retardant moulding material - Polyamide UL94-V0
- Contacts supplied separately (except PCB versions)
- Sealing caps available to maintain IP68 rating
- Secure sealing system
- Crimp and solder contacts
- PCB mounting connector supplied with contacts pre-loaded
- Front and rear panel mounting panel connectors
- CCC, UL, CSA and VDE approvals
- EN60068-2-52 Test Kb Salt Mist (Cyclic) Marine Severity Level 1

Flex Cable Connector



PX0410

- Mates with Flex In-line or Panel mounting versions PX0401, PX0411, PX0412 & PX0413
- Pin or socket
- 2, 3, 4, 6, 8, 10 or 12 pole
- Screw locking ring
- Contacts supplied separately

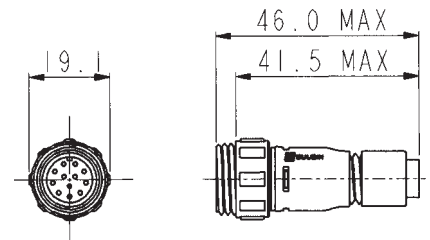


Inline Flex Cable Connector



PX0411

- Mates with Flex Cable connectors PX0400, PX0402 & PX0410
- Pin or socket
- 2, 3, 4, 6, 8, 10 or 12 pole
- For in-line cable connection
- Contacts supplied separately

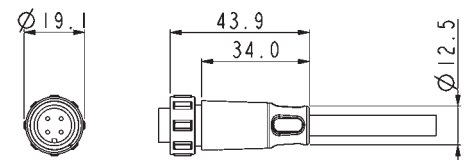


Pre Wired Flex Cable Connector



PX0400

- Overmoulded Flex connector for pre-wired cable assemblies
- Pin or socket
- Cable range 2.5 -9.0mm o/d
- 2, 3, 4, 6, 8, 10 or 12 pole
- Mates with PX0401 & PX0411 Flex In-Line connectors and PX0412 & PX0413 panel mounting connectors

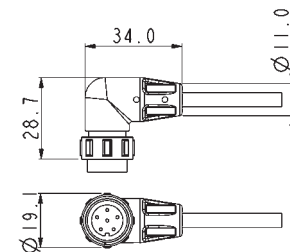


Pre Wired Flex Cable Connector



PX0402

- Right-angled overmoulded Flex connector for pre-wired cable assemblies
- Pin or socket
- Cable range 2.5 -9.0mm o/d
- 2, 3, 4, 6, 8, 10 or 12 pole
- Mates with PX0401 & PX0411 Flex In-Line connectors and PX0412 & PX0413 panel mounting connectors

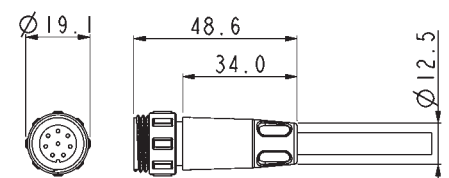


Pre Wired Inline Flex Connector



PX0401

- Overmoulded Flex connector for pre-wired cable assemblies
- Pin or socket
- Cable range 2.5 -9.0mm o/d
- 2, 3, 4, 6, 8, 10 or 12 pole
- Mates with PX0400, PX0402 & PX0410 Flex connectors

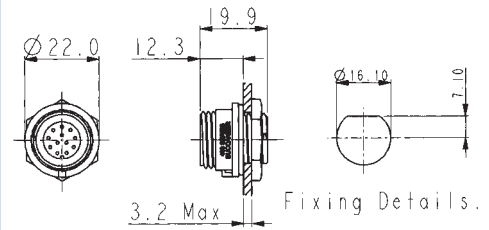


Front Panel Mounting Connector



PX0412

- Mates with Flex Cable connectors PX0410, PX0400 & PX0402
- Front Panel mounting
- Single hole fixing
- Contacts supplied separately
- 2, 3, 4, 6, 8, 10 or 12 pole

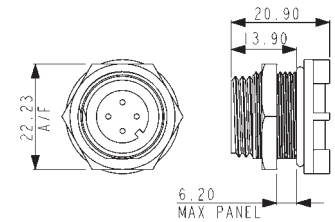


Rear Panel Mounting Connector



PX0413

- Mates with Flex Cable connector PX0410, PX0400 & PX0402
- Rear Panel mounting
- Single hole fixing
- Contacts supplied separately
- 2, 3, 4, 6, 8, 10 or 12 pole

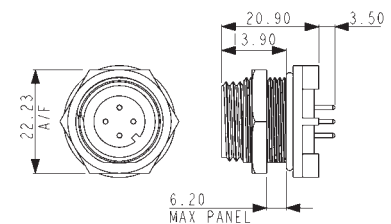


PCB Mounting Connector



PX0413

- Mates with Flex Cable connector PX0410, PX0400 & PX0402
- PCB Rear Panel mounting
- Straight PC spills
- Supplied with pre-loaded gold plated contacts
- 2, 3, 4, 6, 8, 10 or 12 pole



Sealing Caps and Accessories



PX0480 PX0480/1 PX0481 PX0484

- Maintains IP68 Rating of Unmated Connectors
- PX0480: Fits PX0412 (panel mounting)
- PX0480/1: Fits PX0401 & PX0411 (flex in-line)
- PX0481: Fits PX0400, PX0402 & PX0410 (flex connector)
- PX0484: Fits PX0413 (PCB and rear panel mount)

Gland Packs

| Part No | Description |
|---------|---|
| PX0482 | Pack of 4 pairs cable glands and collets to suit cables from 3.0 to 5.0mm diameter. |
| PX0483 | Pack of 4 pairs cable glands and collets to suit cables from 5.0 to 7.0mm diameter. |

BUCCANEER FOR POWER

400 Series Buccaneer

Specifications



Crimp Contacts

| Pole | Current Rating | Pin | Socket | Pack Qty | Cable Acceptance (dia) |
|---------|----------------|--------|--------|----------|------------------------|
| 2, 3 | 8A | SA3350 | SA3349 | 10 | 20 - 24 AWG |
| 4, 6, 8 | 5A | SA3348 | SA3347 | 10 | 22 - 26 AWG |
| 10, 12 | 1A | SA3180 | SA3179 | 10 | 24 - 28 AWG |

Solder Contacts

| Pole | Current Rating | Pin | Socket | Pack Qty | Cable Acceptance (dia) |
|---------|----------------|----------|----------|----------|------------------------|
| 2, 3 | 8A | SA3350/1 | SA3349/1 | 10 | 20 - 24 AWG |
| 4, 6, 8 | 5A | SA3348/1 | SA3347/1 | 10 | 22 - 26 AWG |
| 10, 12 | 1A | SA3180/1 | SA3179/1 | 10 | 24 - 28 AWG |

Insertion / Extraction

| | Poles | Contact Rating | Colour | Part No |
|---------------------------|-------|----------------|--------|---------|
| Insertion/Extraction Tool | 2,3 | 8A | Blue | 13027/2 |
| Insertion/Extraction Tool | 4,6,8 | 5A | Red | 13027/1 |
| Insertion/Extraction Tool | 10,12 | 1A | Green | 13027 |

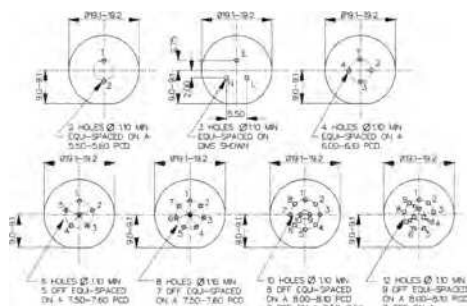
Crimp tools

| | Poles | Contact Rating | Colour | Part No |
|--|-------|----------------|--------|------------|
| Positioner | 2,3 | 8A | Blue | 14025/8AMP |
| Positioner | 4,6,8 | 5A | Red | 14025/5AMP |
| Positioner | 10,12 | 1A | Green | 14025/1AMP |
| 8 Indent Crimp Tool for use with positioners | | | | 14025 |

PX0413 PCB Contact Layout

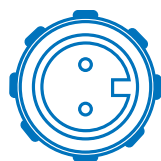
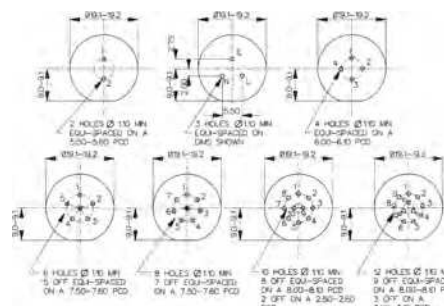
Sockets

Contact numbers viewed from rear of panel



Plugs

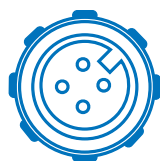
Contact numbers viewed from rear of panel



2 pole
(8 Amp)



3 pole
(8 Amp)



4 pole
(5 Amp)



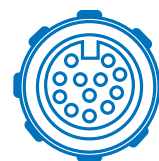
6 pole
(5 Amp)



8 pole
(5 Amp)



10 pole
(1 Amp)



12 pole
(1 Amp)



Electrical:

| | | | |
|-------------------------|-----------------------------------|-----------|--------|
| No. Poles: | 2, 3 | 4, 6, 8 | 10, 12 |
| Current Rating: | 8A | 5A | 1A |
| Voltage Rating (ac/dc): | 250Vac/dc | 125Vac/dc | 50Vdc |
| Contact Resistance: | <5mΩ | | |
| Insulation Resistance: | >10 ⁹ MΩ (@ 500V d.c.) | | |
| AC Breakdown voltage: | 2.5kV | | |

Operating Temperature:
 Flex and panel types -40°C to +80°C
 Overmoulded -20°C to +60°C

Approvals:

| | |
|-----|--|
| UL | E214972 |
| CSA | 1273303 |
| VDE | 40002226 |
| CCC | 2011010203500398 – 1 Amp Rated 2011010203500399 – 5 Amp Rated 2011010203500400 – 8 Amp Rated |

Overmoulded cable assemblies approvals to customer requirements.

Material:

| | |
|-----------------------|---------------------------|
| Flex and panel types: | |
| Body Mouldings: | Polyamide |
| Flammability Rating: | UL94V-0 |
| UV Resistance: | To EN 50021:1999 |
| Overmoulded types: | |
| Body Mouldings: | Polyurethane |
| Flammability Rating: | UL94V-HB |
| Contacts: | Copper alloy, Gold plated |
| O Rings: | Nitrile |
| Panel Sealing O Ring: | Nitrile |
| RoHS | Compliant |

Mechanical:

| | |
|-----------------------------|--|
| Sealing: | IP68, EN60529:1992+A2:2013 tested @ 1.054kg/sq cm (15lb/sq in) 10m depth for 2 weeks |
| Salt Mist: | EN60068-2-52 Test Kb Salt Mist (Cyclic) Marine Severity Level 1 |
| Cable Acceptance: | 3.0 - 7.0mm |
| Contact Accommodation: | 2, 3 pole, 20 - 24 AWG 4, 6, 8 pole, 22 - 26 AWG 10, 12 pole, 24 - 28 AWG |
| Termination: | Crimp, solder and PCB |
| Insertion/Withdrawal Force: | |
| No. poles: | 2 3 4 6 8 10 12 |
| Insertion Force (typ): | 19N 25N 27N 27N 28N 55N 62N |
| Withdrawal Force (typ): | 12N 17N 17N 21N 22N 25N 29N |
| Tightening Torques: | |
| Panel mount (PX0412) | |
| Rear fixing nut: | 1.0-1.1Nm (9lbf.in.) |
| Panel mount (PX0413) | |
| Front fixing nut: | 1.0-1.1Nm (9lbf.in.) |
| Cable Retention force: | |
| 3.0mm dia | 60N |
| 4.0 to 7.0mm dia | 80N |
| Rear panel thread PX0412: | M16x1.5 |
| Panel thread PX0413: | 18.97x26TPI Whitworth form to BS84 med fit |

Dimensions:

| | |
|--|--------|
| Overall dimensions of connectors when mated together | |
| Flex + Flex In-Line | 80mm |
| Dia. over coupling ring | 19.1mm |

| PX04 xx | / | XX | X | / | XXXX |
|---|----------|--|--|----------|---|
| <p>Body Styles</p> <p>PX0410 = Flex body PX0411 = Flex in-line body PX0412 = Front panel mounting body PX0413 = Rear panel/PCB mounting body</p> | | <p>Number Contacts</p> <p>02 = 2 pole, 03 = 3 pole, 04 = 4 pole, 06 = 6 pole, 08 = 8 pole, 10 = 10 pole, 12 = 12 pole</p> | <p>Contact Type</p> <p>P = Pin, S = Socket</p> | | <p>For PX0410 and PX0411 cable connectors - Cable Entry Size:</p> <p>3035 = 3.0 - 3.5mm (Light Grey) 3540 = 3.5 - 4.0mm (Grey) 4045 = 4.0 - 4.5mm (Green) 4550 = 4.5 - 5.0mm (Red)</p> <p>5055 = 5.0 - 5.5mm (Yellow) 5560 = 5.5 - 6.0mm (Blue) 6065 = 6.0 - 6.5mm (White) 6570 = 6.5 - 7.0mm (Black)</p> <p>Cable gland and collet supplied in colour coded pairs.</p> <p>For PX0413 PCB/Rear Panel Mount: PC = Pre-loaded PC pins Blank = no pins supplied</p> <p>For PX0412 Front Panel Mount: Suffix not required - leave blank</p> |
| <p>Examples:</p> <p>PX0410/10S/4045 = Flex cable connector, 10 socket contacts with gland and collet for cables between 4.0 and 4.5mm diameter (supplied less contacts). PX0412/08P = Front panel mounting connector, 8 pin contacts (supplied less contacts). PX0413/06P = Rear panel mounting connector, for 6 pin contacts (supplied less contacts). PX0413/04P/PC = Rear panel/PCB connector, 4 pin contacts, PCB mounting (supplied with contacts loaded).</p> | | | | | |