

RJ45 socket insert - VS-08-BU-RJ45-10G/LH-1 - 1420401

Please be informed that the data shown in this PDF Document is generated from our Online Catalog. Please find the complete data in the user's documentation. Our General Terms of Use for Downloads are valid (<http://phoenixcontact.com/download>)



RJ45 socket insert, for PCB assembly, CAT6_A, 8-pos., shielded, with angled solder pins, 1x



Key Commercial Data

Packing unit	1 STK
GTIN	
GTIN	4046356547895
Weight per Piece (excluding packing)	5.500 g
Custom tariff number	85366990
Country of origin	Germany
Note	Made to Order (non-returnable)

Technical data

Mechanical characteristics

Number of positions	8
Number of slots	1
Connection profile	RJ45
Degree of protection	IP20
Design	Angled

Electrical characteristics

Number of positions	8
Transmission characteristics (category)	CAT6 _A

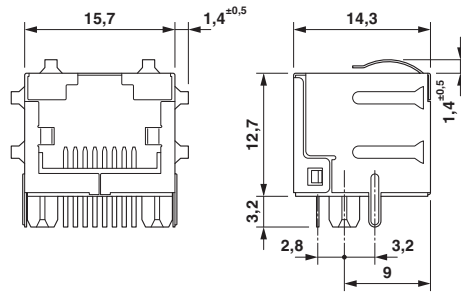
Environmental Product Compliance

China RoHS	Environmentally Friendly Use Period = 50
	For details about hazardous substances go to tab "Downloads", Category "Manufacturer's declaration"

RJ45 socket insert - VS-08-BU-RJ45-10G/LH-1 - 1420401

Drawings

Dimensional drawing



RJ45 socket insert

Approvals

Approvals

Approvals

EAC

Ex Approvals

Approval details

EAC		B.01742
-----	--	---------