

Pin/socket, panel feed-through - SF-7EE1N8AS000 - 1605567


Please be informed that the data shown in this PDF Document is generated from our Online Catalog. Please find the complete data in the user's documentation. Our General Terms of Use for Downloads are valid (<http://phoenixcontact.com/download>)



Pin/socket, panel feed-through, straight, M23, M23, number of positions: 4+3+PE, type of contact: Socket, Crimp connection, Axial O-ring, 4xM3, shielded: yes, cable diameter range: 0 mm...0 mm

RoHS

Key Commercial Data

Packing unit	1 STK
GTIN	 4 046356 253635
GTIN	4046356253635
Weight per Piece (excluding packing)	166.880 g
Custom tariff number	85444290
Country of origin	Germany
Note	Made to Order (non-returnable)

Technical data

General

Type of locking	M23
Coding	N
Contact connection method	Crimp connection
Type of contacts	Socket
Number of positions	8
Nominal current per power contact at 25°C	30 A
Nominal current per signal contact at 25°C	9 A
Conductor entry	0 mm ... 0 mm
Pg housing screw connection	none
Mounting type	4x M3

Ambient conditions

Ambient temperature	-40 °C ... 125 °C
Degree of protection	IP67

Pin/socket, panel feed-through - SF-7EE1N8AS000 - 1605567

Technical data

Material

Housing material	Turned parts: copper zinc alloy (CuZn), die-cast parts: zinc (GD-Zn)
Insulator material	PA 66
Gasket and O-ring material	FPM

Specifications according to DIN EN 61984:2001

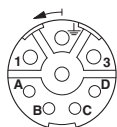
Installation height max.	3000 m
Nominal / operating voltage of power contacts	630 V
Rated surge voltage of power contacts	4 kV
Overvoltage category of power contacts	III
Degree of pollution of power contacts	3
Nominal / operating voltage of signal contacts	250 V
Rated surge voltage of signal contacts	6 kV
Overvoltage category of signal contacts	III
Degree of pollution of signal contacts	3

Environmental Product Compliance

China RoHS	Environmentally Friendly Use Period = 50
	For details about hazardous substances go to tab "Downloads", Category "Manufacturer's declaration"

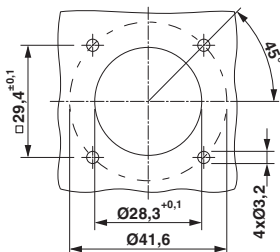
Drawings

Schematic diagram



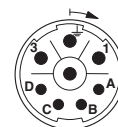
Socket pin assignment

Dimensional drawing



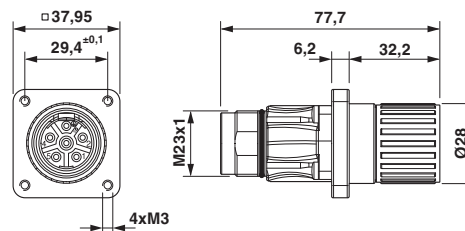
Installation dimensions

Schematic diagram



Pin assignment of pin

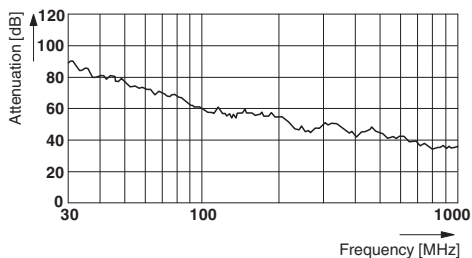
Dimensional drawing



Dimensional drawing

Pin/socket, panel feed-through - SF-7EE1N8AS000 - 1605567

Diagram



Classifications

eCl@ss

eCl@ss 4.0	272607xx
eCl@ss 4.1	27260701
eCl@ss 5.0	27260701
eCl@ss 5.1	27260701
eCl@ss 6.0	27260708
eCl@ss 7.0	27440312
eCl@ss 8.0	27440103
eCl@ss 9.0	27440102

ETIM

ETIM 3.0	EC001121
ETIM 4.0	EC001121
ETIM 5.0	EC002061
ETIM 6.0	EC002061

UNSPSC

UNSPSC 6.01	43172015
UNSPSC 7.0901	43201404
UNSPSC 11	43172015
UNSPSC 12.01	43201404
UNSPSC 13.2	39121413

Approvals

Approvals

Approvals

EAC

Ex Approvals

Pin/socket, panel feed-through - SF-7EE1N8AS000 - 1605567

Approvals

Approval details

EAC		B.00767
-----	---	---------

Accessories

Accessories

Mounting material

Torque screwdriver - SF-Z0028 - 1607456



Torque screwdriver

Hook wrench - SF-Z0027 - 1607455



Hook wrench

Protective cover

Plastic dust protection cap - SF-Z0019 - 1607449



Plastic dust protection cap - RC-Z2059 - 1604225



Plastic dust protection cap for connectors with M23 external thread

Pin/socket, panel feed-through - SF-7EE1N8AS000 - 1605567

Accessories

Plastic anti-static dust protection cap - RC-Z2469 - 1611797



Plastic dust protection cap, anti-static, for RF, SF, CA, RC series connectors, with M23 external thread

Metal dust protection cap - SC-Z2319 - 1605456



Metal dust protection cap for power plugs with M23 external thread

Metal dust protection cap - SC-Z2320 - 1605457



Metal dust protection cap with steel wire for power plugs with M23 external thread

Phoenix Contact 2017 © - all rights reserved
<http://www.phoenixcontact.com>