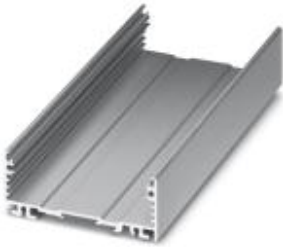


## Electronic housing - UM-ALU 4-72 PROFILE 200 - 2200922

Please be informed that the data shown in this PDF Document is generated from our Online Catalog. Please find the complete data in the user's documentation. Our General Terms of Use for Downloads are valid (<http://phoenixcontact.com/download>)




Panel mounting base, Lower part, color: aluminum color, width: 75 mm, length: 200 mm, height: 29.4 mm

### Why buy this product

- ✓ Item is from the UM-ALU product range
- ✓ Aluminum press-drawn section
- ✓ Available in lengths from 42.5 mm ... 990 mm, can be cut to any length
- ✓ Available in overall widths of 75 mm and 105 mm
- ✓ Variety of connection technologies
- ✓ Can be mounted on the DIN rail
- ✓ EMC protection

RoHS

### Key Commercial Data

Packing unit	1 STK
GTIN	 4 046356 716260
GTIN	4046356716260
Weight per Piece (excluding packing)	158.700 g
Custom tariff number	76042990
Country of origin	Germany
Note	Made to Order (non-returnable)

### Technical data

#### General

Housing type	Panel mounting base
Housing material	Aluminum
Color (RAL)	aluminum color

#### Ambient conditions

Ambient temperature (operation)	-40 °C ... 100 °C (depending on power dissipation)
---------------------------------	----------------------------------------------------

# Electronic housing - UM-ALU 4-72 PROFILE 200 - 2200922

## Technical data

### Dimensions

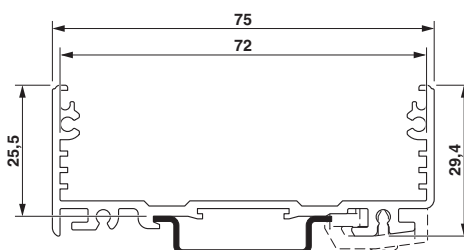
Length	200 mm
Constructional height	29.4 mm
Width	75 mm
Depth	72 mm

### Environmental Product Compliance

China RoHS	Environmentally friendly use period: unlimited = EFUP-e
	No hazardous substances above threshold values

## Drawings

Dimensional drawing



## Classifications

### eCl@ss

eCl@ss 4.0	27180401
eCl@ss 4.1	27180401
eCl@ss 5.0	27180506
eCl@ss 5.1	27180506
eCl@ss 6.0	27182003
eCl@ss 7.0	27182701
eCl@ss 8.0	27182701
eCl@ss 9.0	27182701

### ETIM

ETIM 3.0	EC001031
ETIM 4.0	EC000721
ETIM 5.0	EC002779
ETIM 6.0	EC002779

### UNSPSC

UNSPSC 6.01	31261501
UNSPSC 7.0901	31261501
UNSPSC 11	31261501

## Electronic housing - UM-ALU 4-72 PROFILE 200 - 2200922

### Classifications

#### UNSPSC

UNSPSC 12.01	31261501
UNSPSC 13.2	31261501

### Accessories

#### Necessary add-on products

##### Components of electronic housing - UM-ALU 4-72 COVER AL - 2200933

Panel mounting base, Side part, color: aluminum color, width: 75 mm, length: 2 mm, height: 31 mm



##### Components of electronic housing - UM-ALU 4-72 COVERLID 45 AL - 2201758

Panel mounting base, Side part, color: aluminum color, width: 75 mm, length: 2 mm, height: 58.5 mm



##### Components of electronic housing - UM-ALU 4-72 COVERLID 75 AL - 2202085

Panel mounting base, Side part, color: aluminum color, width: 75 mm, length: 2 mm, height: 73.5 mm



##### Mounting material - UM-ALU 4 FOOT - 2200974



Panel mounting base, Base latch, color: gray

### Additional products

## Electronic housing - UM-ALU 4-72 PROFILE 200 - 2200922

### Accessories

#### Components of electronic housing - UM-ALU 4 AU45 L200 - 2200959



Panel mounting base, Upper part, color: aluminum color, width: 45 mm, length: 200 mm, height: 28.1 mm

---

#### Components of electronic housing - UM-ALU 4 AU75 L200 - 2200968



Panel mounting base, Upper part, color: aluminum color, width: 75 mm, length: 200 mm, height: 43.1 mm

---

#### Components of electronic housing - UM-ALU 4-72 FRONT 200 AP - 2202091



Panel mounting base, Front plate, color: aluminum color, width: 71.8 mm, length: 200 mm, height: 2 mm

---

---