

## Electronic housing - CM125-LG/H 35/BO/DB/GH BK - 2941840

Please be informed that the data shown in this PDF Document is generated from our Online Catalog. Please find the complete data in the user's documentation. Our General Terms of Use for Downloads are valid (<http://phoenixcontact.com/download>)



Complete housing with vents, Cross connection: without bus connector, color: black, width: 125 mm, length: 102 mm, height: 138 mm, number of positions cross connector: not relevant

The figure shows versions CM 125-LG/H 35/BO/DB/GH

### Why buy this product

- Easy snap-on mounting on symmetrical DIN rails according to EN 60715
- Rugged housing technology
- Flexible accommodation of different connection elements (from high-position connectors to electronic PCBs)
- Shock and contamination-proof accommodation of electronic components

### Key Commercial Data

Packing unit	5 STK
GTIN	
GTIN	4017918126377
Weight per Piece (excluding packing)	357.200 g
Custom tariff number	85369010
Country of origin	Germany
Note	Made to Order (non-returnable)

### Technical data

#### General

Housing type	Complete housing
Housing material	Polycarbonate fiber reinforced
Color (RAL)	black (9005)

#### Ambient conditions

Ambient temperature (operation)	-40 °C ... 105 °C (depending on power dissipation)
---------------------------------	--

#### Dimensions

# Electronic housing - CM125-LG/H 35/BO/DB/GH BK - 2941840

## Technical data

### Dimensions

Length	102 mm
Constructional height	138 mm
Width	125 mm
Depth	102 mm

### Technical data

Power dissipation without gap	84.4 W
Power dissipation with 20 mm gap	109.7 W

### Standards and Regulations

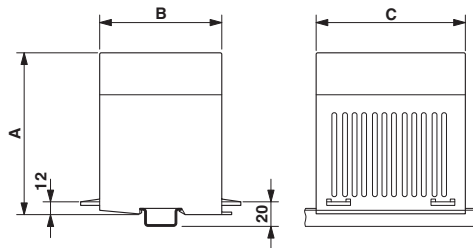
Flammability rating according to UL 94	V0
--	----

### Environmental Product Compliance

China RoHS	Environmentally friendly use period: unlimited = EFUP-e
	No hazardous substances above threshold values

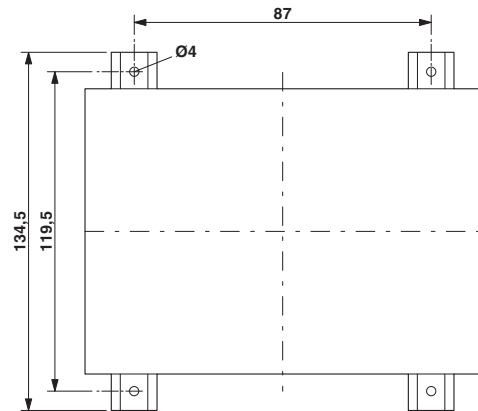
## Drawings

Dimensional drawing



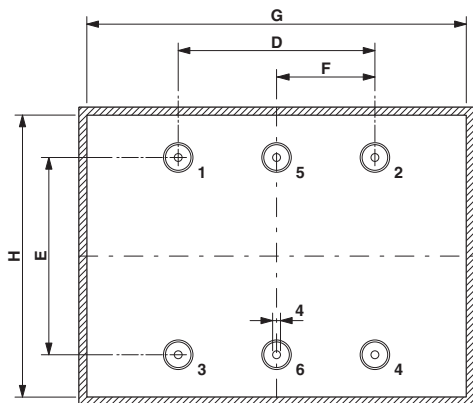
Dimension A: 138 mm; dimension B: 102 mm; dimension C: 125 mm

Dimensional drawing



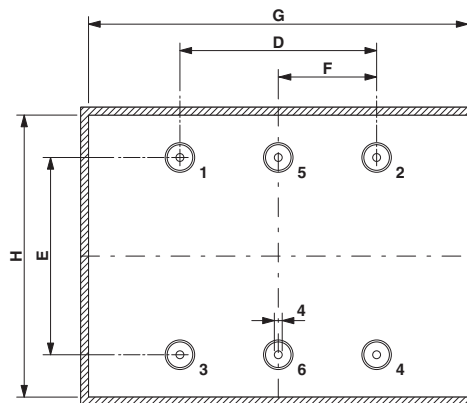
# Electronic housing - CM125-LG/H 35/BO/DB/GH BK - 2941840

Dimensional drawing



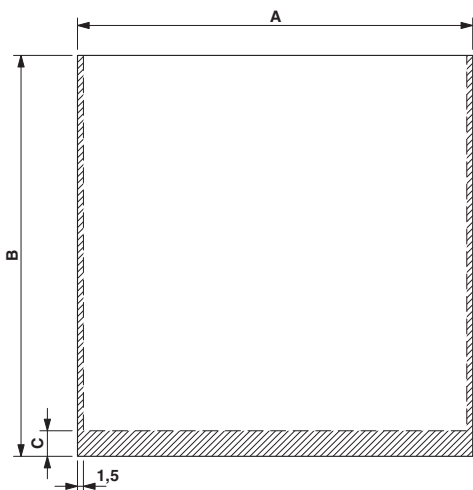
Dimension D: 87.5 mm; E: 70.0 mm; G: 119.0 mm; H: 96.0 mm  
 Spacer pins 1 - 4: Height 23 mm;  $\varnothing$  4 mm

Dimensional drawing



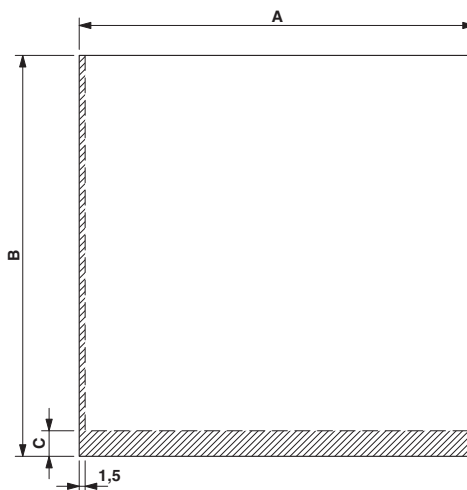
Dimension D: 87.5 mm; E: 70.0 mm; G: 119.0 mm; H: 96.0 mm  
 Spacer pins 1 - 4: Height 23 mm;  $\varnothing$  4 mm

Dimensional drawing



PCB 1, 7: Dimension A: 122.5 mm; B: 124.8 mm; C: 0 mm  
 PCB 8, 13: Dimension A: 100.0 mm; B: 124.8 mm; C: 6.5 mm  
 PCB 9-12: Dimension A: 100.0 mm; B: 124.8 mm; C: 0 mm

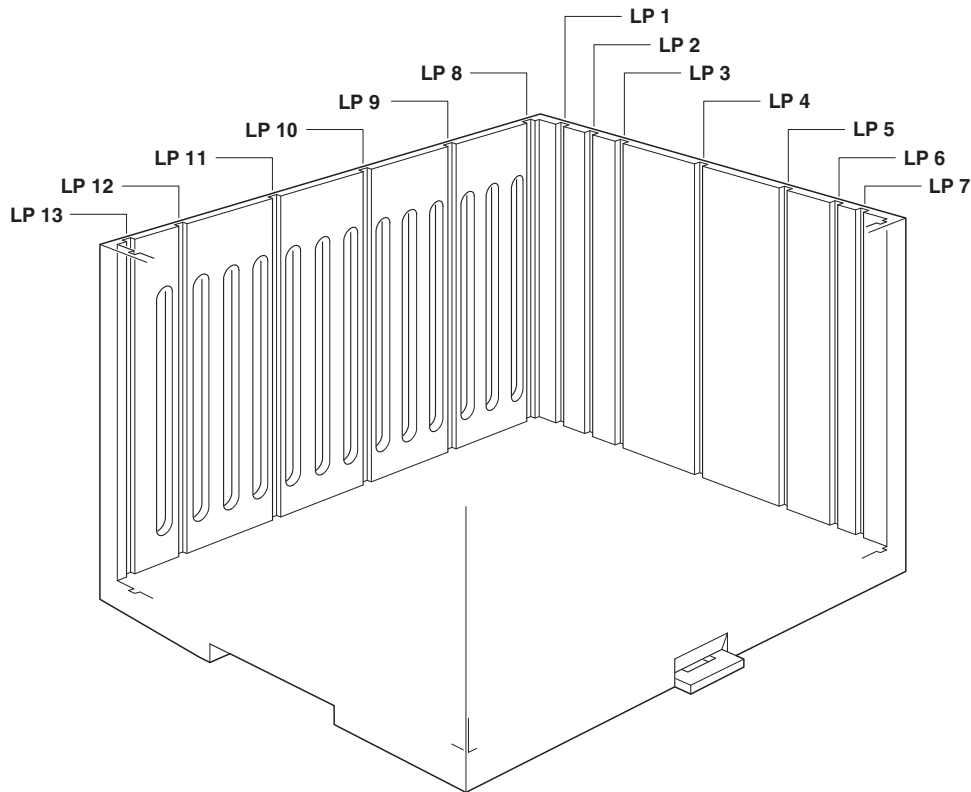
Dimensional drawing



PCB 1, 7: Dimension A: 122.5 mm; B: 124.8 mm; C: 0 mm  
 PCB 8, 13: Dimension A: 100.0 mm; B: 124.8 mm; C: 6.5 mm  
 PCB 9-12: Dimension A: 100.0 mm; B: 124.8 mm; C: 0 mm

# Electronic housing - CM125-LG/H 35/BO/DB/GH BK - 2941840

Schematic diagram



## Classifications

### eCl@ss

eCl@ss 4.0	27180401
eCl@ss 4.1	27180401
eCl@ss 5.0	27180506
eCl@ss 5.1	27180506
eCl@ss 6.0	27180802
eCl@ss 7.0	27182702
eCl@ss 8.0	27182702
eCl@ss 9.0	27182702

### ETIM

ETIM 2.0	EC001031
ETIM 3.0	EC001031
ETIM 4.0	EC001031
ETIM 5.0	EC001031
ETIM 6.0	EC001031

## Electronic housing - CM125-LG/H 35/BO/DB/GH BK - 2941840

### Classifications

#### UNSPSC

UNSPSC 6.01	31261501
UNSPSC 7.0901	31261501
UNSPSC 11	31261501
UNSPSC 12.01	31261501
UNSPSC 13.2	31261501

Phoenix Contact 2017 © - all rights reserved  
<http://www.phoenixcontact.com>