



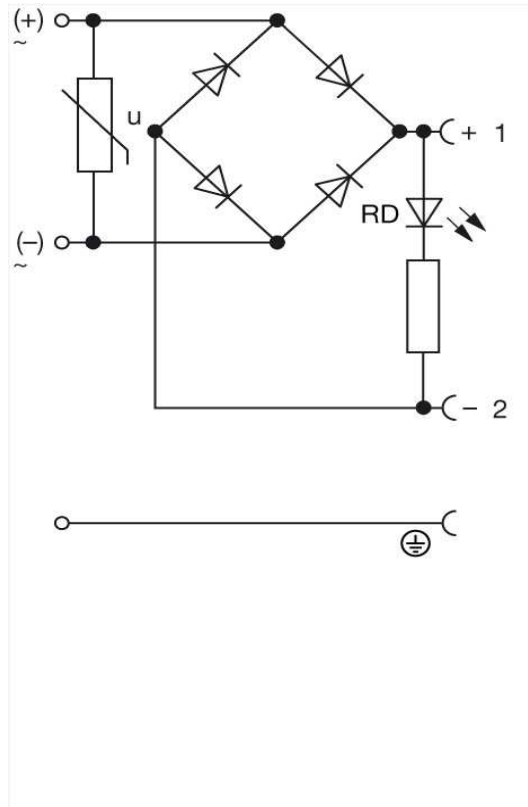
Product information
GML 209 NJ GB1 LED 24 grau/grey
933 642-106

Name	
GML 209 NJ GB1 LED 24 grau/grey	
	
Bridge-type rectifier with protective circuit (varistor) and function indicator (LED)	
Delivery informations	
Availability	available
Product description	
Description	Bridge-type rectifier with protective circuit (varistor) and function indicator (LED)
Type	GML 209 NJ GB1 LED 24 grau/grey
Order No.	933 642-106
Other standard types	transparent housing, locking screw black: Order No. 933 642-100
Number of contacts	2 + PE
Cable gland	PG 9 (grey)
Conductor size	max. 0.75 mm ²
Standard	industrial standard (11 mm)
Housing Color	transparent
Construction type	B
Description of Wiring	
LED color	LED red
Voltage rectifier	bridge-type rectifier
Suppressor	Varistor
Technical data	
Pin dimensions	6.3 mm x 0.8 mm
Rated voltage	AC/DC 24 V
Rated current	2 A (SEV 1011 : 1,5 A) AC / 1 A DC
Contact resistance	<= 4 mOhm
Type of termination	screw / cable shoe / cable eye
Suitable cables	4.5 mm to 7 mm diameter
Mounting	central screw
Material	
Contact surface material	Sn
Contact bearer material	PA
Housing material	PA
Environmental conditions	
Protection class (IEC 60529)	IP 65
Pollution severity	3
Temperature range	-40 °C to +90 °C
Inflammability class	
Housing	94 V-1
Contact bearer	94 HB
Approvals	
UR	UR
VDE	VDE
Packing unit	
Packaging unit	50 pieces

The information published has been compiled as carefully as possible. It is subject to alteration without notice in technical as well as in price related/commercial respect.

Scope of delivery and accessories

Picture
Drawing



The information published has been compiled as carefully as possible. It is subject to alteration without notice in technical as well as in price related/commercial respect.