



Product information
GML 209 NJ GB1 LED 230 schwarz/black
933 933-100

Name GML 209 NJ GB1 LED 230 schwarz/black



Bridge-type rectifier with protective circuit (varistor) and function indicator (LED)

Delivery informations

Availability available

Product description

Description Bridge-type rectifier with protective circuit (varistor) and function indicator (LED)

Type GML 209 NJ GB1 LED 230 schwarz/black

Order No. 933 933-100

Other standard types transparent housing, cable gland grey; Order No. 933 933-106

Number of contacts 2 + PE

Cable gland PG 9 (black)

Conductor size max. 1.5 mm²

Standard industrial standard (11 mm)

Housing Color transparent

Construction type B

Description of Wiring

LED color LED red

Voltage rectifier bridge-type rectifier

Suppressor Varistor

Technical data

Pin dimensions 6.3 mm x 0.8 mm

Rated voltage AC/DC 250 V

Rated current 2 A (SEV 1011 : 1,5 A) AC / 1 A DC

Contact resistance <= 4 mOhm

Type of termination screw / cable shoe / cable eye

Suitable cables 4.5 mm to 7 mm diameter

Mounting central screw

Material

Contact surface material Sn

Contact bearer material PA

Housing material PA

Environmental conditions

Protection class (IEC 60529) IP 65

Pollution severity 3

Temperature range -40 °C to +90 °C

Inflammability class

Housing 94 V-1

Contact bearer 94 HB

Approvals

UR UR

VDE VDE

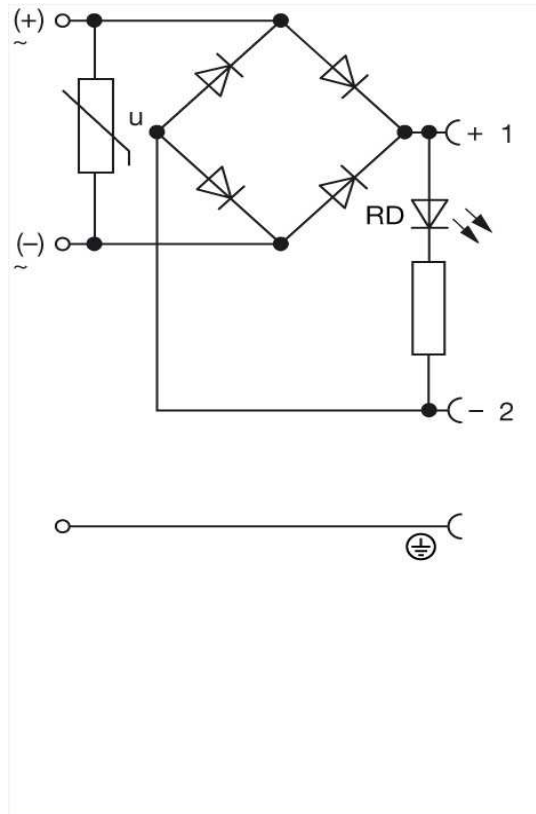
Packing unit

Packaging unit 50 pieces

The information published has been compiled as carefully as possible. It is subject to alteration without notice in technical as well as in price related/commercial respect.

Scope of delivery and accessories

Picture
Drawing



The information published has been compiled as carefully as possible. It is subject to alteration without notice in technical as well as in price related/commercial respect.