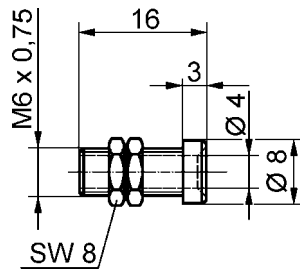


Socket

- not insulated
- hole ø 6.1 mm

order no. BU 404

- contact part material: brass
- contact part: nickel-plated

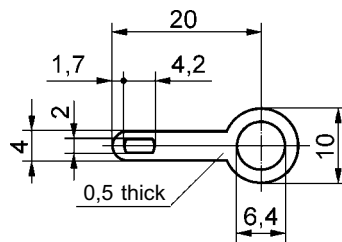


Socket

- not insulated
- hole ø 6.1 mm

order no. BU 405

- contact part material: brass
- contact part: nickel-plated



Soldering loop

- fits sockets IBU 401 / .. (colour), IBU 403 / .. (colour), BU 404, BU 405

order no. LÖ 6,4 x 20

- contact part material: brass
- plating: tin-plating

| General information | | | Technical data | | | | |
|---|----------------------|---------|-----------------------------|-----------------------|--|---------------|-------------------------|
| order no. | max. torque for nuts | colours | terminal | transition resistance | rated voltage | rated current | operating temperature |
| BU 404 contact part nickel-plated | 300 Ncm | — | soldering or soldering loop | < 10 mΩ | 30 V _{AC} 60 V _{DC} | 32 A | - 40 °C ... + 110 °C |
| BU 405 contact part nickel-plated | 300 Ncm | — | soldering or soldering loop | <10 mΩ | 30 V _{AC} 60 V _{DC} | 32 A | - 40 °C ... + 110 °C |
| LÖ 6,4 x 20 tin-plated | | | soldering | | | | |

other types and platings on request