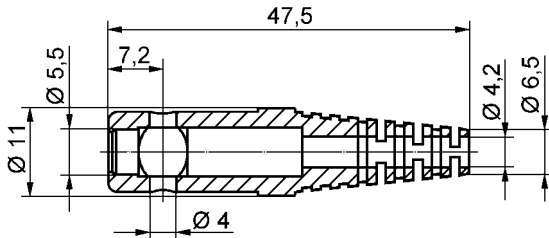


### Lamella-basket plug

- straight, with soldering cup
- with sleeve, unassembled

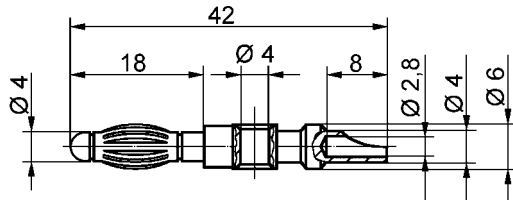
**order no. FK 8 L / ..(colour)**  
 - contact part **nickel-plated**  
 - sleeve TPE (Evoprene)  
 for wire square section up to **2,5 mm<sup>2</sup>**  
 for insulation diameter up to **4 mm**

colours : see table



**order no. FK 8 L AU / ..(colour)**  
 - as above, but contact parts **gold-plated**

colours : see table

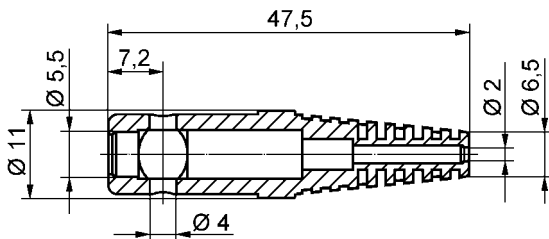


### Lamella-basket plug

- straight, with soldering cup
- with sleeve, unassembled

**order no. FK 82 L / ..(colour)**  
 - contact part **nickel-plated**  
 - sleeve TPE (Evoprene)  
 for wire square section up to **0,5 mm<sup>2</sup>**  
 for insulation diameter up to **2 mm**

colours : see table



**order no. FK 82 L AU / ..(colour)**  
 - as above, but contact parts **gold-plated**

colours : see table

General information			Technical data				
order no.	sleeve for lead	colours	terminal	transition resistance	rated voltage	rated current	operating temperature
<b>FK 8 L / ..(colour)</b> contact part nickel-plated	ø 4 mm		soldering - 2,5 mm <sup>2</sup>	3 mΩ	30 V <sub>AC</sub> 60 V <sub>DC</sub>	32 A	- 30 °C ... + 110 °C
<b>FK 8 L AU / ..(colour)</b> contact part gold-plated	ø 4 mm	black red blue	soldering - 2,5 mm <sup>2</sup>	3 mΩ	30 V <sub>AC</sub> 60 V <sub>DC</sub>	32 A	- 30 °C ... + 110 °C
<b>FK 82 L / ..(colour)</b> contact part nickel-plated	ø 2 mm	yellow green	soldering - 0,5 mm <sup>2</sup>	3 mΩ	30 V <sub>AC</sub> 60 V <sub>DC</sub>	10 A	- 30 °C ... + 110 °C
<b>FK 82 L AU / ..(colour)</b> contact part gold-plated	ø 2 mm		soldering - 0,5 mm <sup>2</sup>	3 mΩ	30 V <sub>AC</sub> 60 V <sub>DC</sub>	10 A	- 30 °C ... + 110 °C

other colours and platings on request