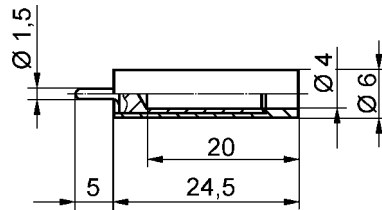




Laboratory socket

- suitable to install a permanent measuring point with a socket. For that the pin is screwed under.
Pin length 5 mm.



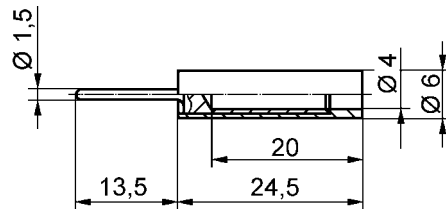
order no. LB 4-1,5 S / 5 / ..(colour)

- contact parts **nickel-plated**
- insulation PA 6.6 (Polyamid)

colours: see table

Laboratory socket

- as above, but pin length 13,5 mm



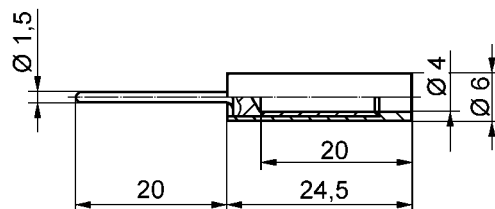
order no. LB 4-1,5 S / 13,5 / ..(colour)

- contact parts **nickel-plated**
- insulation PA 6.6 (Polyamid)

colours: see table

Laboratory socket

- as above, but pin length 20 mm



order no. LB 4-1,5 S / 20 / ..(colour)

- contact parts **nickel-plated**
- insulation PA 6.6 (Polyamid)

colours: see table

General information		Technical data				
order no.	colours	terminal	transition resistance	rated voltage	rated current	operating temperature
LB 4-1,5 S / 5 / .. (colour) contact parts nickel-plated			<10 mΩ	... V*	18 A	- 25 °C ... + 90 °C
LB 4-1,5 S / 13,5 / .. (colour) contact parts nickel-plated	black red blue	pin	<10 mΩ	... V*	18 A	- 25 °C ... + 90 °C
LB 4-1,5 S / 20 / .. (colour) contact parts nickel-plated			<10 mΩ	... V*	18 A	- 25 °C ... + 90 °C

* depending on assembly up to 900 V, CAT II, degree of contamination II

other colours and platings on request