



**ELECTROUSTIC**  
DISTRIBUTION OF CONNECTIVITY SOLUTIONS

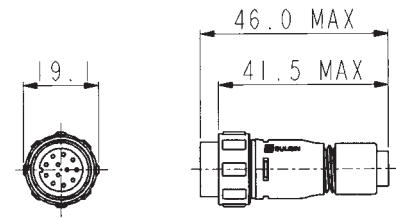
- ⊗ Sealed to IP68 when mated
- ⊗ IP68 rating tested at 1.054kg/sq cm (15lb/sq in) 10m depth for 2 weeks
- ⊗ 2 and 3 pole - 8A, 250V rating
- ⊗ 4, 6 and 8 pole - 5A, 125V rating
- ⊗ 10 and 12 pole - 1A, 50V rating
- ⊗ 2.5mm contact engagement for electrical integrity 'Scoop proof' contacts
- ⊗ Contact inserts are part of body moulding
- ⊗ Cable range from 3 to 7mm
- ⊗ Overall length (flex + flex in-line) 80mm
- ⊗ Gold plated contacts
- ⊗ Diameter over coupling ring 19.1mm
- ⊗ Pre-wired, overmoulded cable assemblies
- ⊗ Flex, Flex In-Line, Front Panel, Rear Panel and PCB mounting body styles
- ⊗ Plug and Socket versions in all body styles
- ⊗ Flame Retardant moulding material - Polyamide UL94-V0
- ⊗ Contacts supplied separately (except PCB versions)
- ⊗ Sealing caps available to maintain IP68 rating
- ⊗ Secure sealing system
- ⊗ Crimp and solder contacts
- ⊗ PCB mounting connector supplied with contacts pre-loaded
- ⊗ Front and rear panel mounting panel connectors
- ⊗ CCC, UL, CSA and VDE approvals
- ⊗ EN60068-2-52 Test Kb Salt Mist (Cyclic) Marine Severity Level 1

Flex Cable Connector



PX0410

- Mates with Flex In-line or Panel mounting versions PX0401, PX0411, PX0412 & PX0413
- Pin or socket
- 2, 3, 4, 6, 8, 10 or 12 pole
- Screw locking ring
- Contacts supplied separately

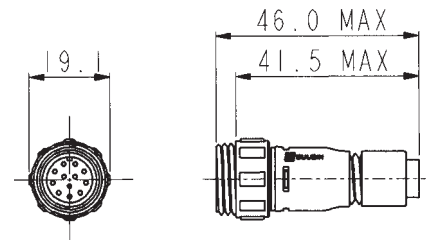


Inline Flex Cable Connector



PX0411

- Mates with Flex Cable connectors PX0400, PX0402 & PX0410
- Pin or socket
- 2, 3, 4, 6, 8, 10 or 12 pole
- For in-line cable connection
- Contacts supplied separately

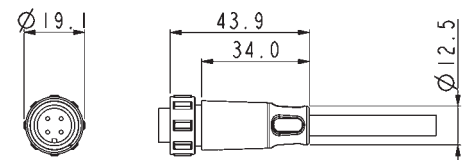


Pre Wired Flex Cable Connector



PX0400

- Overmoulded Flex connector for pre-wired cable assemblies
- Pin or socket
- Cable range 2.5 -9.0mm o/d
- 2, 3, 4, 6, 8, 10 or 12 pole
- Mates with PX0401 & PX0411 Flex In-Line connectors and PX0412 & PX0413 panel mounting connectors

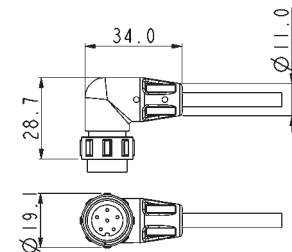


Pre Wired Flex Cable Connector



PX0402

- Right-angled overmoulded Flex connector for pre-wired cable assemblies
- Pin or socket
- Cable range 2.5 -9.0mm o/d
- 2, 3, 4, 6, 8, 10 or 12 pole
- Mates with PX0401 & PX0411 Flex In-Line connectors and PX0412 & PX0413 panel mounting connectors

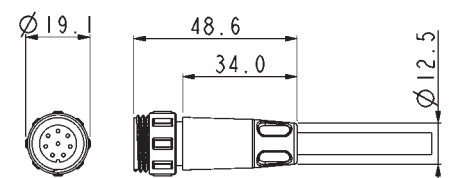


Pre Wired Inline Flex Connector



PX0401

- Overmoulded Flex connector for pre-wired cable assemblies
- Pin or socket
- Cable range 2.5 -9.0mm o/d
- 2, 3, 4, 6, 8, 10 or 12 pole
- Mates with PX0400, PX0402 & PX0410 Flex connectors

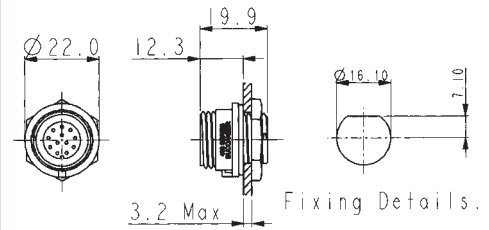


Front Panel Mounting Connector



PX0412

- Mates with Flex Cable connectors PX0410, PX0400 & PX0402
- Front Panel mounting
- Single hole fixing
- Contacts supplied separately
- 2, 3, 4, 6, 8, 10 or 12 pole

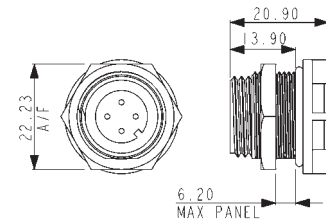


Rear Panel Mounting Connector



PX0413

- Mates with Flex Cable connector PX0410, PX0400 & PX0402
- Rear Panel mounting
- Single hole fixing
- Contacts supplied separately
- 2, 3, 4, 6, 8, 10 or 12 pole

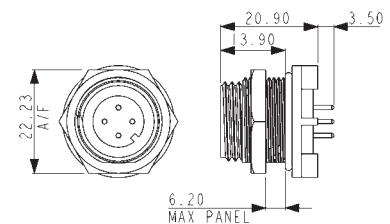


PCB Mounting Connector



PX0413

- Mates with Flex Cable connector PX0410, PX0400 & PX0402
- PCB Rear Panel mounting
- Straight PC spills
- Supplied with pre-loaded gold plated contacts
- 2, 3, 4, 6, 8, 10 or 12 pole



Sealing Caps and Accessories



PX0480 PX0480/1 PX0481 PX0484

- Maintains IP68 Rating of Unmated Connectors
- PX0480: Fits PX0412 (panel mounting)
- PX0480/1: Fits PX0401 & PX0411 (flex in-line)
- PX0481: Fits PX0400, PX0402 & PX0410 (flex connector)
- PX0484: Fits PX0413 (PCB and rear panel mount)

Gland Packs

| Part No | Description   |
|---------|---|
| PX0482  | Pack of 4 pairs cable glands and collets to suit cables from 3.0 to 5.0mm diameter. |
| PX0483  | Pack of 4 pairs cable glands and collets to suit cables from 5.0 to 7.0mm diameter. |

# BUCCANEER FOR POWER

## 400 Series Buccaneer

Specifications



### Crimp Contacts

| Pole    | Current Rating | Pin    | Socket | Pack Qty | Cable Acceptance (dia) |
|---------|----------------|--------|--------|----------|------------------------|
| 2, 3    | 8A             | SA3350 | SA3349 | 10       | 20 - 24 AWG            |
| 4, 6, 8 | 5A             | SA3348 | SA3347 | 10       | 22 - 26 AWG            |
| 10, 12  | 1A             | SA3180 | SA3179 | 10       | 24 - 28 AWG            |

### Solder Contacts

| Pole    | Current Rating | Pin      | Socket   | Pack Qty | Cable Acceptance (dia) |
|---------|----------------|----------|----------|----------|------------------------|
| 2, 3    | 8A             | SA3350/1 | SA3349/1 | 10       | 20 - 24 AWG            |
| 4, 6, 8 | 5A             | SA3348/1 | SA3347/1 | 10       | 22 - 26 AWG            |
| 10, 12  | 1A             | SA3180/1 | SA3179/1 | 10       | 24 - 28 AWG            |

### Insertion / Extraction

|                           | Poles | Contact Rating | Colour | Part No |
|---------------------------|-------|----------------|--------|---------|
| Insertion/Extraction Tool | 2,3   | 8A             | Blue   | 13027/2 |
| Insertion/Extraction Tool | 4,6,8 | 5A             | Red    | 13027/1 |
| Insertion/Extraction Tool | 10,12 | 1A             | Green  | 13027   |

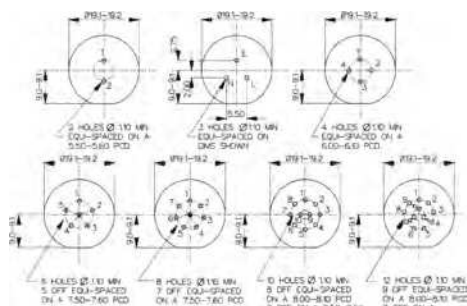
### Crimp tools

|  | Poles | Contact Rating | Colour | Part No    |
|--|-------|----------------|--------|------------|
| Positioner                                   | 2,3   | 8A             | Blue   | 14025/8AMP |
| Positioner                                   | 4,6,8 | 5A             | Red    | 14025/5AMP |
| Positioner                                   | 10,12 | 1A             | Green  | 14025/1AMP |
| 8 Indent Crimp Tool for use with positioners |       |                |        | 14025      |

### PX0413 PCB Contact Layout

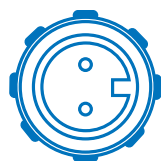
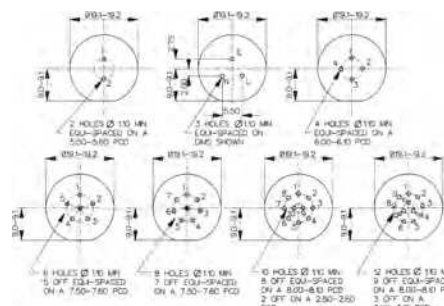
#### Sockets

Contact numbers viewed from rear of panel



#### Plugs

Contact numbers viewed from rear of panel



2 pole  
(8 Amp)



3 pole  
(8 Amp)



4 pole  
(5 Amp)



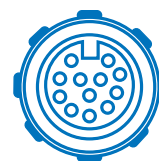
6 pole  
(5 Amp)



8 pole  
(5 Amp)



10 pole  
(1 Amp)



12 pole  
(1 Amp)







**Electrical:**

|                         |                                   |           |        |
|-------------------------|-----------------------------------|-----------|--------|
| No. Poles:              | 2, 3                              | 4, 6, 8   | 10, 12 |
| Current Rating:         | 8A                                | 5A        | 1A     |
| Voltage Rating (ac/dc): | 250Vac/dc                         | 125Vac/dc | 50Vdc  |
| Contact Resistance:     | <5mΩ                              |           |        |
| Insulation Resistance:  | >10 <sup>9</sup> MΩ (@ 500V d.c.) |           |        |
| AC Breakdown voltage:   | 2.5kV                             |           |        |

Operating Temperature:  
 Flex and panel types -40°C to +80°C  
 Overmoulded -20°C to +60°C

Approvals:

|  |  |
|--|--|
|  UL  | E214972  |
|  CSA | 1273303  |
|  VDE | 40002226   |
|  CCC | 2011010203500398 – 1 Amp Rated<br>2011010203500399 – 5 Amp Rated<br>2011010203500400 – 8 Amp Rated |

Overmoulded cable assemblies approvals to customer requirements.

**Material:**

|  |                           |
|--|---------------------------|
| Flex and panel types:  |                           |
| Body Mouldings:  | Polyamide                 |
| Flammability Rating:   | UL94V-0                   |
| UV Resistance:   | To EN 50021:1999          |
| Overmoulded types:   |                           |
| Body Mouldings:  | Polyurethane              |
| Flammability Rating:   | UL94V-HB                  |
| Contacts:  | Copper alloy, Gold plated |
| O Rings:   | Nitrile                   |
| Panel Sealing O Ring:  | Nitrile                   |
|  | Compliant                 |

**Mechanical:**

|                             |  |
|-----------------------------|--|
| Sealing:                    | IP68, EN60529:1992+A2:2013 tested @ 1.054kg/sq cm (15lb/sq in) 10m depth for 2 weeks |
| Salt Mist:                  | EN60068-2-52 Test Kb Salt Mist (Cyclic) Marine Severity Level 1                      |
| Cable Acceptance:           | 3.0 - 7.0mm  |
| Contact Accommodation:      | 2, 3 pole, 20 - 24 AWG<br>4, 6, 8 pole, 22 - 26 AWG<br>10, 12 pole, 24 - 28 AWG      |
| Termination:                | Crimp, solder and PCB  |
| Insertion/Withdrawal Force: |  |
| No. poles:                  | 2 3 4 6 8 10 12  |
| Insertion Force (typ):      | 19N 25N 27N 27N 28N 55N 62N  |
| Withdrawal Force (typ):     | 12N 17N 17N 21N 22N 25N 29N  |
| Tightening Torques:         |  |
| Panel mount (PX0412)        |  |
| Rear fixing nut:            | 1.0-1.1Nm (9lbf.in.)   |
| Panel mount (PX0413)        |  |
| Front fixing nut:           | 1.0-1.1Nm (9lbf.in.)   |
| Cable Retention force:      |  |
| 3.0mm dia                   | 60N  |
| 4.0 to 7.0mm dia            | 80N  |
| Rear panel thread PX0412:   | M16x1.5  |
| Panel thread PX0413:        | 18.97x26TPI Whitworth form to BS84 med fit   |

**Dimensions:**

|  |        |
|--|--------|
| Overall dimensions of connectors when mated together |        |
| Flex + Flex In-Line                                  | 80mm   |
| Dia. over coupling ring                              | 19.1mm |

| PX04 xx   | / | XX   | / | X  | / | XXXX  |
|---|---|--|---|--|---|---|
| <p><b>Body Styles</b></p> <p>PX0410 = Flex body<br/>                     PX0411 = Flex in-line body<br/>                     PX0412 = Front panel mounting body<br/>                     PX0413 = Rear panel/PCB mounting body</p>  |   | <p><b>Number Contacts</b></p> <p>02 = 2 pole,<br/>                     03 = 3 pole,<br/>                     04 = 4 pole,<br/>                     06 = 6 pole,<br/>                     08 = 8 pole,<br/>                     10 = 10 pole,<br/>                     12 = 12 pole</p> |   | <p><b>Contact Type</b></p> <p>P = Pin,<br/>                     S = Socket</p> |   | <p><b>For PX0410 and PX0411 cable connectors - Cable Entry Size:</b></p> <p>3035 = 3.0 - 3.5mm (Light Grey)<br/>                     3540 = 3.5 - 4.0mm (Grey)<br/>                     4045 = 4.0 - 4.5mm (Green)<br/>                     4550 = 4.5 - 5.0mm (Red)</p> <p>5055 = 5.0 - 5.5mm (Yellow)<br/>                     5560 = 5.5 - 6.0mm (Blue)<br/>                     6065 = 6.0 - 6.5mm (White)<br/>                     6570 = 6.5 - 7.0mm (Black)</p> <p>Cable gland and collet supplied in colour coded pairs.</p> <p>For PX0413 PCB/Rear Panel Mount:<br/>                     PC = Pre-loaded PC pins<br/>                     Blank = no pins supplied</p> <p>For PX0412 Front Panel Mount:<br/>                     Suffix not required - leave blank</p> |
| <p><b>Examples:</b></p> <p>PX0410/10S/4045 = Flex cable connector, 10 socket contacts with gland and collet for cables between 4.0 and 4.5mm diameter (supplied less contacts).<br/>                     PX0412/08P = Front panel mounting connector, 8 pin contacts (supplied less contacts).<br/>                     PX0413/06P = Rear panel mounting connector, for 6 pin contacts (supplied less contacts).<br/>                     PX0413/04P/PC = Rear panel/PCB connector, 4 pin contacts, PCB mounting (supplied with contacts loaded).</p> |   |  |   |  |   |   |