

The bloomice ATAUD L LTE / 4G antenna is a robust versatile IP65 panel mounted antenna designed for use in challenging environments providing excellent performance across a wide spectrum.

A tuned copper element is embedded within a rugged ABS housing. The housing is fixed to either a metallic or non-metallic enclosure via five integrated fixing points.

The bloomice ATAUD L LTE / 4G antenna is perfectly suited for use within the automotive industry, transportation sector, marine environment and with any externally sited data transfer application where reliability coupled with superb performance is essential.

**PRODUCT OVERVIEW**

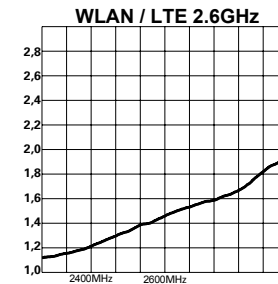
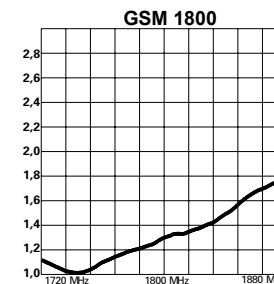
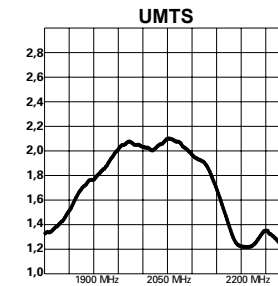
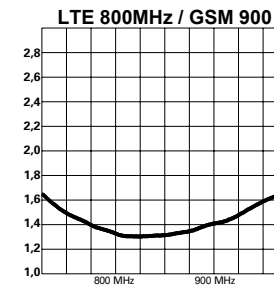


**PRODUCT PICTURE**

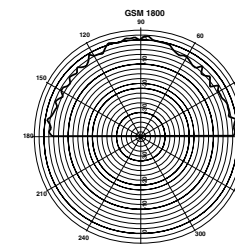
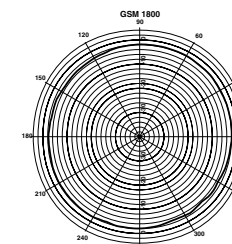
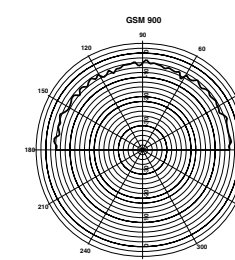
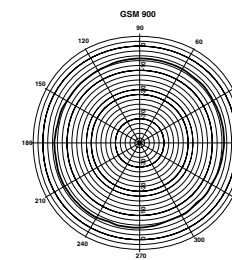
**CAD DRAWING**

Polarisation	Vertical / Horizontal
Frequency	800MHz, 850MHz, 900MHz, 960MHz, 1710MHz, 1800MHz, 1900MHz, 2100MHz, 2400MHz, 2700MHz
Gain	800 - 960MHz - 2.15dBi / 1710 - 2100MHz - 4.15dBi / 2400 - 2700MHz - 2.15dBi
Impedance / Power Handling	50Ω / 10W
Physical Characteristics	
Dimensions	160mm x 65mm x 50mm
Net Weight	276g
Operational Temperature	-30°C to +65°C
Colour	Black or Grey
Protection	IP65
Cable Type	RG174 / LMR-195 / RG58
Cable Length / Connector Type	According to customer specification

**TECHNICAL DATA**



**TYPICAL VSWR**



**RADIATION PATTERNS**



**CERTIFICATION**

All details shown subject to alteration without notice.

© bloomice SL 2018  
All Rights Reserved

for bloomice product information  
Visit [www.bloomice.eu](http://www.bloomice.eu)  
Mail [info@bloomice.eu](mailto:info@bloomice.eu)  
Call our Sales & Marketing Team  
on +44 (0) 12 34 84 35 09