


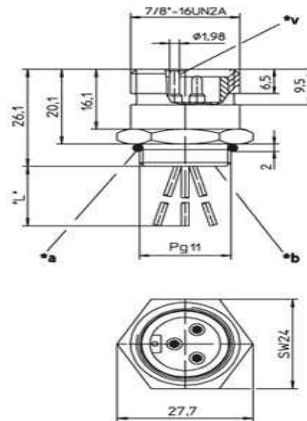


Product information
RSF - RSF 30/11-01
11622

Name	
RSF	
	
Receptacle connector, 7/8" male connector, for front mounting, assembled stranded wire, solder contacts potted with epoxy, 3 poles (2+PE), chassis side thread PG 11 (panel nut RSKF 11), O-ring enclosed separately.	
Delivery informations	
Availability	available
Product description	
Type	RSF 30/11-01
Order No.	11622
Description	Receptacle connector, 7/8" male connector, for front mounting, assembled stranded wire, solder contacts potted with epoxy, 3 poles (2+PE), chassis side thread PG 11 (panel nut RSKF 11), O-ring enclosed separately.
Number of contacts	3
Product characteristics	Oil resistance
Mechanical data	
Type of plug-in contact	Male connector
Thread	7/8"
Design of electrical connection	connector 7/8 inch
LED display present	✗
Environmental conditions	
Environmental temperature	-25 °C ... 90 °C
Degree of protection (IP), mounted	IP68
Pollution degree	3
Materials	
Housing material / Molded body	CuZn, nickel-plated
Contact bearer material	TPU, self-extinguishing
Contact material	CuZn
Contact material - Surface refinement	silver-plated and 0.3 microns gold-plated
Sealing material	Neoprene
Electrical data	
Contact resistance	≤ 5 mΩ
Rated current In	at 40°C, UL and notice derating
Nominal voltage	240 V
Rated voltage	250 V
Insulation resistance	> 1 GΩ
Approvals	
Approvals	UL listed
RoHS 2002/95/EG compliant	RoHS 2002/95/EG
Scope of delivery and accessories	
Scope of delivery	O-ring enclosed separately



Picture
Drawing



- *a O-Ring lose beigestellt
O-ring enclosed separately
- *b Leiteranschlussbereich vergossen
solder contacts potted with epoxy
- "L" 0,3 m