



Product information
0910 ASL 409
26823

Name	
0910 ASL 409	
	
AS-Interface flat cable module with 4 digital inputs to connect standard sensors, combined FIXCON/M12 socket, infrared interface for the addressing	
Delivery informations	
Availability	available
Product description	
Type	0910 ASL 409
Order No.	26823
Description	AS-Interface flat cable module with 4 digital inputs to connect standard sensors, combined FIXCON/M12 socket, infrared interface for the addressing
Diagnostics	According to the AS-Interface specification 2.1, periphery errors like short circuits or overloads can be sent to the master in the form of a group diagnostics. In addition, there is a status LED on the relevant slave.
Note	The input channels are connected together. That allows a greater connection flexibility (see pin assignment). In case of connection of a two-channel sensor to input socket 1 or 3 a further sensor must not be plugged to input socket 2 or 4 respectively due to the Y wiring of the inputs. The application of these products in harsh environments should always be checked before use. Specifications subject to alteration.
Color of housing	orange
Product characteristics	Oil resistance, EMC resistance, Vibration resistance
Classification	
Belden class	I/O Modules with Digital Inputs (DI)
Belden brand	Lumberg-Automation
Mechanical data	
Weight	200 g
Dimensions (W x H x D)	60 mm x 118 mm x 35.8 mm
Environmental conditions	
Environmental temperature	-25 °C ... 80 °C
Degree of protection (IP), mounted	IP67
Materials	
Housing material / Molded body	PUR
Approvals	
Approvals	UL
Bus system	
Fieldbus system	AS-Interface Version 2.1
Bus Connection	ASI flat cable connection
Device Identification	AS-Interface profile: S 0.A.E; I/O configuration: 0 hex; ID code: A hex; ID2 code: E hex
Support A/B addressing	Yes
Supply Fieldbus Interface	
Supply Fieldbus Interface	AS-Interface net
Voltage range (Supply Fieldbus Interface)	26.5 - 31.6 V DC
Current consumption (Supply Fieldbus Interface)	max. 250 mA
Reverse polarity protection (Supply Fieldbus Interface)	Yes
Function Indicator (Supply Fieldbus Interface)	LED green
Sensors power supply	
Sensors power supply	AS-Interface net
Voltage range (Sensor power supply)	17-30 V
Sensor current (at TU30°C) (Sensor power supply)	max. 200 mA
Short-circuit proof (Sensor power supply)	Yes

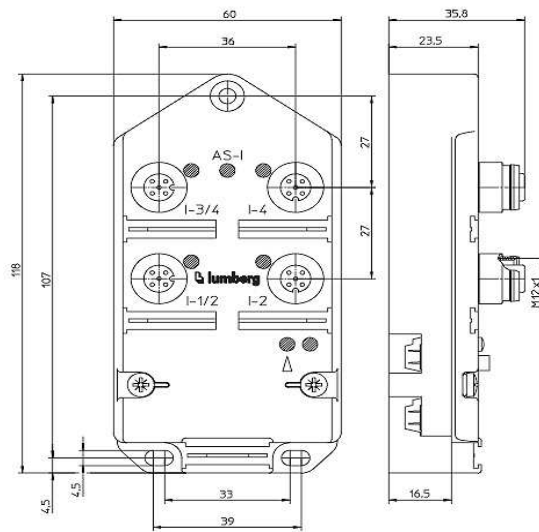
The information published has been compiled as carefully as possible. It is subject to alteration without notice in technical as well as in price related/commercial respect.



Inputs	
Input wiring	Type 2 acc. to IEC 61131-2
Signal type (Inputs)	Digital Inputs
Number of channels (Inputs)	4
Channel type (Inputs)	N.O., p-switching
Nominal input voltage	24 V DC
Voltage (Signal status "1") - Explanation	$U_S > 11 \text{ V} / I_S > 6 \text{ mA}$
Voltage (Signal status "0") - Explanation	$I_S < 2 \text{ mA}$
Channel status indicator (Inputs)	LED yellow per channel
Diagnostic indication (inputs)	LED red
Input current at 24 V DC (typ.)	15 mA

Scope of delivery and accessories	
Scope of delivery	Dust covers M12 - 2 pieces, Attachable label - 10 pieces

Picture	
Drawing	



The information published has been compiled as carefully as possible. It is subject to alteration without notice in technical as well as in price related/commercial respect.