




**Product information**  
**0970 PSL 113**  
**27077**

Name		0970 PSL 113
		
	Profibus-DP device with 8 digital inputs to connect standard sensors and 4 digital outputs to connect standard actuators, combined FIXCON/M12 socket, rotary switches for addressing, M12 bus connection, M23 power supply.	
<b>Delivery informations</b>		
Availability	available	
<b>Product description</b>		
Type	0970 PSL 113	
Order No.	27077	
Description	Profibus-DP device with 8 digital inputs to connect standard sensors and 4 digital outputs to connect standard actuators, combined FIXCON/M12 socket, rotary switches for addressing, M12 bus connection, M23 power supply.	
Note	The application of these products in harsh environments should always be checked before use.	
Color of housing	orange	
Product characteristics	Oil resistance, EMV resistance, Vibration resistance	
<b>Classification</b>		
Belden class	I/O Modules with Digital Inputs and Outputs (DI/DO)	
Belden brand	Lumberg-Automation	
<b>Mechanical data</b>		
Weight	535 g	
Dimensions (W x H x D)	60 mm x 179 mm x 51.3 mm	
<b>Environmental conditions</b>		
Environmental temperature	0 °C ... 60 °C	
Degree of protection (IP), mounted	IP67	
<b>Materials</b>		
Housing material / Molded body	PUR	
<b>Approvals</b>		
Approvals	UL	
<b>Bus system</b>		
Fieldbus system	Profibus DP	
Bus Connection	M12	
Device Identification	0450 hex	
Transmission rate	12 MBd	
Address range	1 dec. ... 126 dec.	
Rotary address switches	1 dec. ... 99 dec.	
Default address	99 dec.	
<b>System power supply</b>		
System power supply	U <sub>L</sub>	
Nominal voltage (System power supply)	24 V DC	
Voltage range DC (System power supply)	19 V ... 30 V	
Power consumption (System power supply)	60 mA	
Reverse polarity protection (System power supply)	Yes	
Operating Indication (System power supply)	LED green	
<b>Sensors power supply</b>		
Voltage range (Sensor power supply)	min.(U <sub>L</sub> - 1.5 V)	
Sensor current (at TU30°C) (Sensor power supply)	800 mA	
Short-circuit proof (Sensor power supply)	Yes	

The information published has been compiled as carefully as possible. It is subject to alteration without notice in technical as well as in price related/commercial respect.



**Actuator power supply**

Actuator power supply	U <sub>S</sub> with potential separation
Nominal voltage (Actuator power supply)	24 V DC
Voltage range (Output power supply)	19 V ... 30 V
Reverse polarity protection (Output power supply)	Yes
Indication (Output power supply)	LED green

**Inputs**

Input wiring	Type 3 acc. to IEC 61131-2
Signal type (Inputs)	Digital Inputs
Number of channels (Inputs)	8
Channel type (Inputs)	N.O., p-switching
Nominal input voltage	24 V DC
Voltage (Signal status "1") - Explanation	11 - 30 V
Voltage (Signal status "0") - Explanation	-3 - 5 V
Channel status indicator (Inputs)	LED yellow per channel
Input current at 24 V DC (typ.)	6 mA

**Outputs**

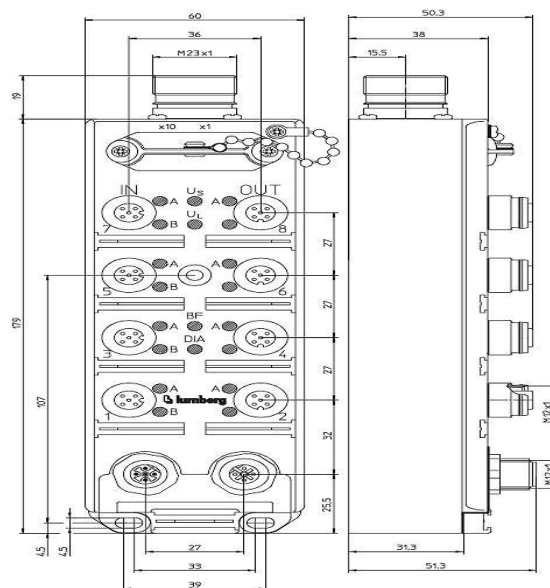
Output wiring	Type 2 A acc. to IEC 61131-2
Signal type (Outputs)	Digital Outputs
Number of channels (Outputs)	4
Channel type (Outputs)	N.O., p-switching
Nominal output current per channel	2 A
Short-circuit proof (Outputs)	Yes
Max. output current per module (Outputs)	8 A
Overload-proof (Outputs)	Yes
Channel status indicator (Outputs)	LED yellow per channel
Diagnostic indication (outputs)	LED red per channel

**Scope of delivery and accessories**

Scope of delivery	Dust covers M12 - 2 pieces, Attachable labels - 10 pieces
-------------------	---

**Picture**

**Drawing**



The information published has been compiled as carefully as possible. It is subject to alteration without notice in technical as well as in price related/commercial respect.