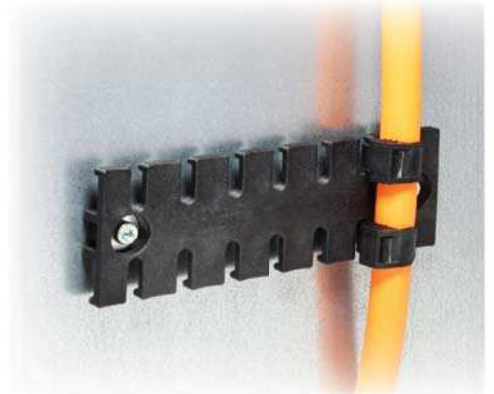
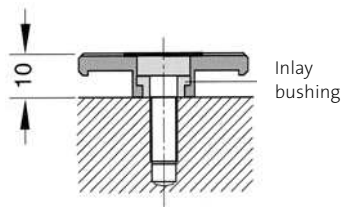


# ZL-AB | ZL-MS

## Strain relief plates for screw assembly



Inlay bushings also available in brass.



Type	Order No. for M4 screws	Order No. for M5 screws	Order No. for M6 screws	Length L1	Length L2	No. of teeth	PU
ZL 39 AB ZL 39 MS	32270	32280 32360	32290	38.5 mm	19.5 mm	3	10
ZL 60 AB ZL 60 MS	32271	32281 32361	32291	59.5 mm	43.5 mm	4	10
ZL 70 AB ZL 70 MS	32272	32282 32362	32292	69.1 mm	43.5 mm	5	10
ZL 87 AB ZL 87 MS	32273	32283 32363	32293	86.5 mm	68 mm	6	10
ZL 103 AB ZL 103 MS	32275	32284 32364	32294	102.5 mm	84 mm	7	10
ZL 121 AB ZL 121 MS	32277	32285 32365	32295	121 mm	102.5 mm	8	10
ZL 140 AB ZL 140 MS	32274	32286 32366	32296	139.5 mm	121 mm	9	10
ZL 180 AB ZL 180 MS	32276	32287 32367	32297	180 mm	157 mm	12	10

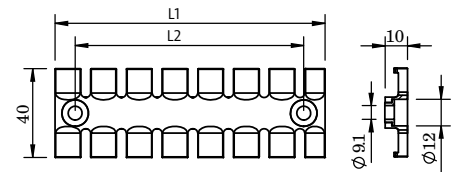
### Product description

The strain relief plate ZL-AB / ZL-MS is used for static or dynamic applications for organising and securing cables on machines, control panels or drag chains.

By using aluminium / brass nuts for the screw holes, a better fit of the strain relief plate is achieved, even in high vibration environments.

### Advantages & benefits

- Strain relief according to EN 62444
- Easy assembly
- Cost-effective
- High cable density
- Wide variety of mounting options



### Specifications

Material	ZL: Polyamide (PA) Bushing: ■ Aluminium (ZL-AB) ■ Brass (ZL-MS)
Flame class	UL94-Vo, self-extinguishing
Temperature	- 40°C to + 140°C (static)
Properties	Halogen-free, silicone-free

### Accessories

ZL|SB-EMC Shield plates 145